

# Sample Boards 2011

---

LAST UPDATED: 22-03-2021

---

DEMO

# Sample Boards

- 11-007 Sample Boards Zuo.....3**
  - 11-007-1.....3**
  - 11-007-2.....4**
- 11-008 Sample Boards Bernien .....5**
- 11-009 Sample Boards Giethoorn .....6**
- 11-010 Sample Boards Laird.....7**
  - 11-010-1.....7**
  - 11-010-2.....8**
  - 11-010-3.....9**

# 11-007 Sample Boards Zuo

11-007-1

**Connector:**

2 x Harwin 2.54mm Header 11-pins

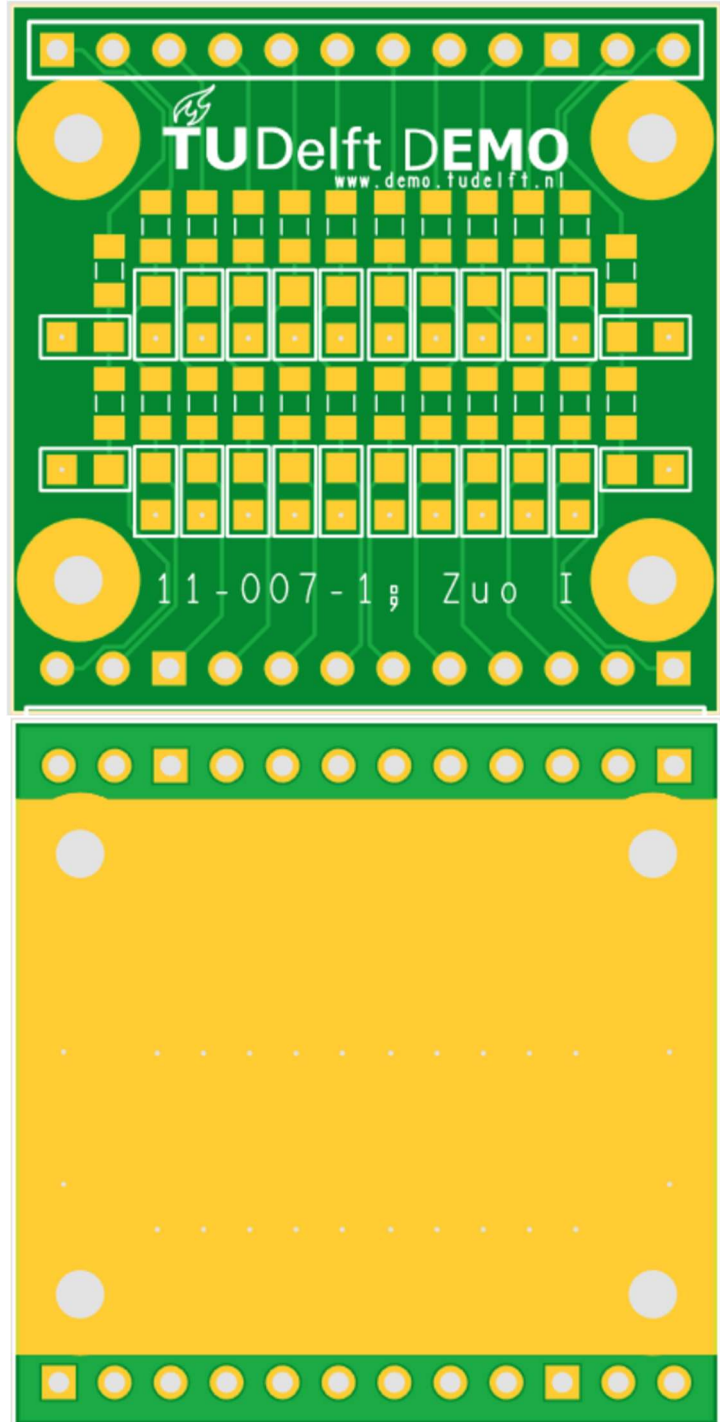
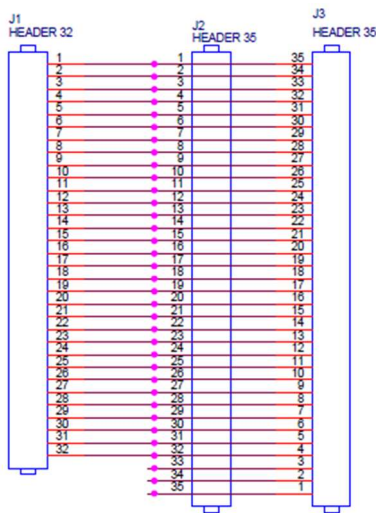
**Copper Finish:**

Ni/Au Selective

**Size (LxWxT):**

32 x 32 x 1.55

**Schematic:**



11-007-2

**Connector:**

2 x FFC35 Right Angle

PLCC 32 Way 1.27mm Pitch

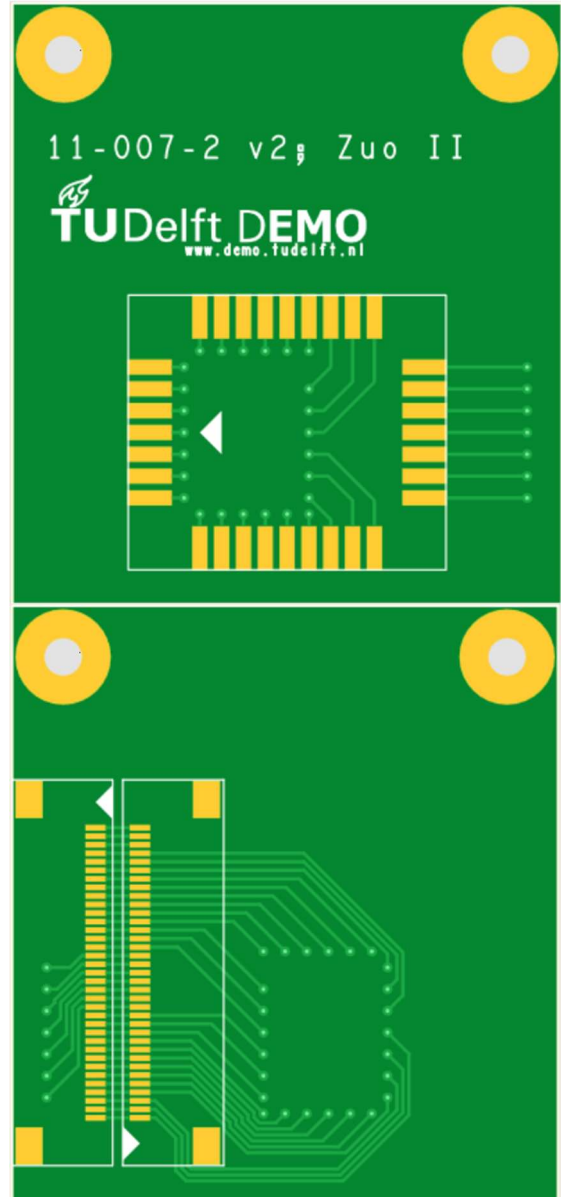
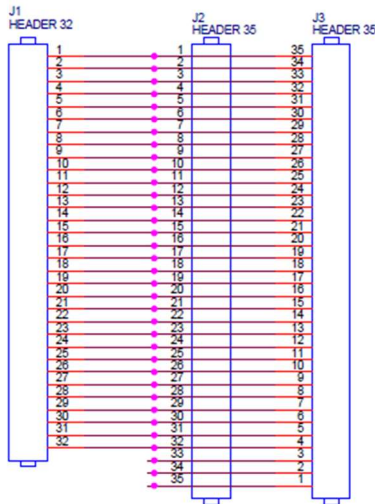
**Copper Finish:**

Ni/Au Selective

**Size (LxWxT):**

35 x 32 x 1.55

**Schematic:**



# 11-008 Sample Boards Bernien

## Connector:

2 x Harwin 2.54mm Header 8-pins

4 x SMA connector PCB Straight Angle

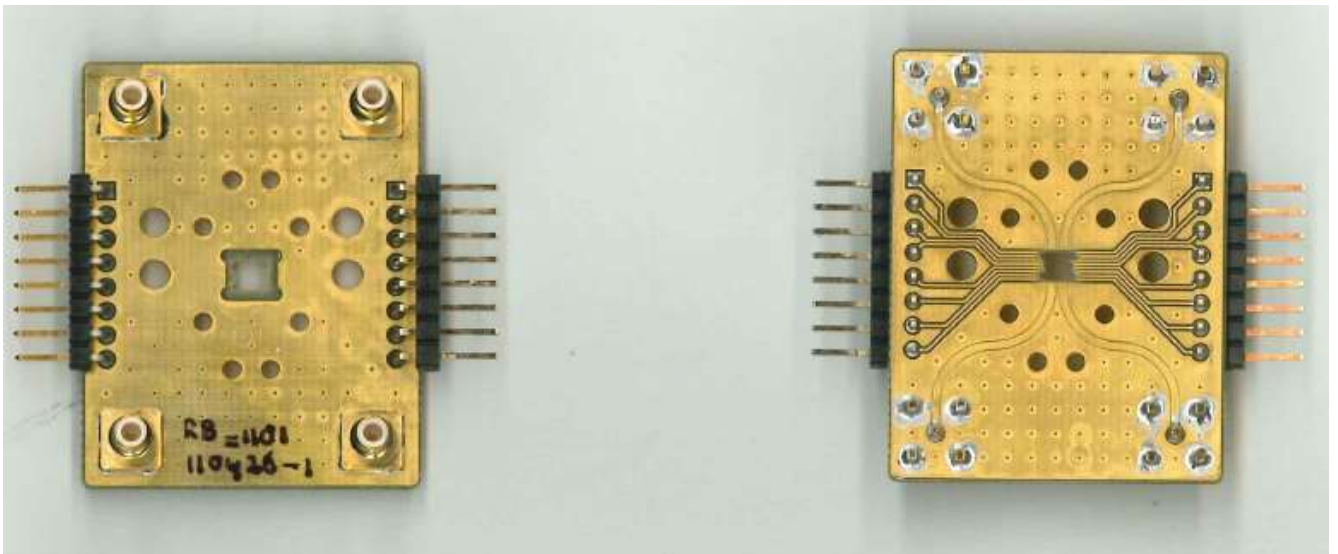
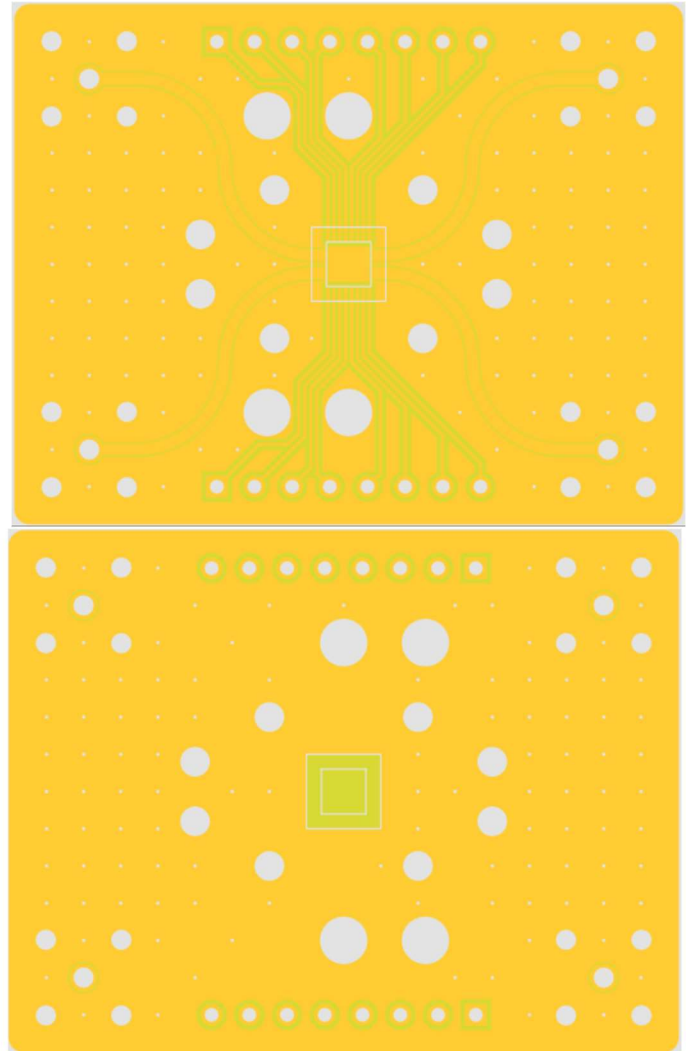
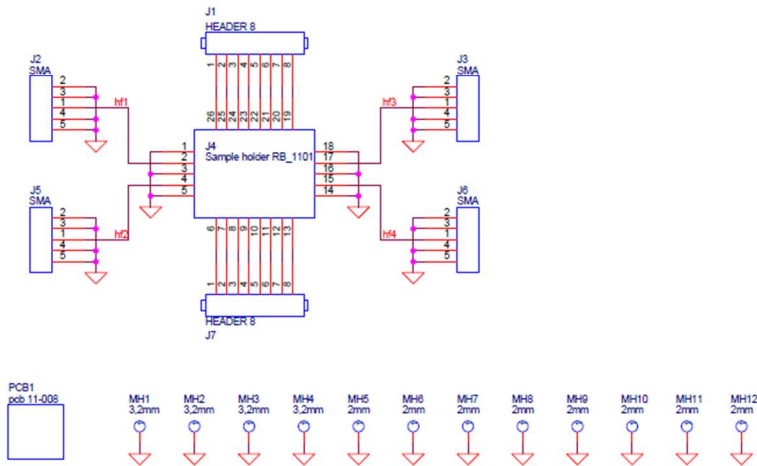
## Copper Finish:

Ni/Au Selective

## Size (LxWxT):

35 x 45 x 1.55

## Schematic:



# 11-009 Sample Boards Giethoorn

## Connector:

3 x FFC35 Right Angle

2 x SMA Connector Right Angle

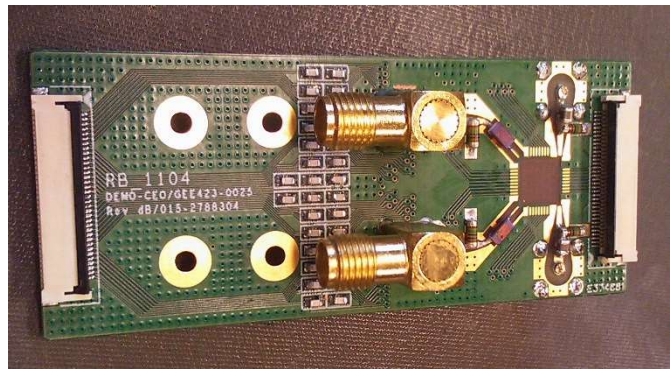
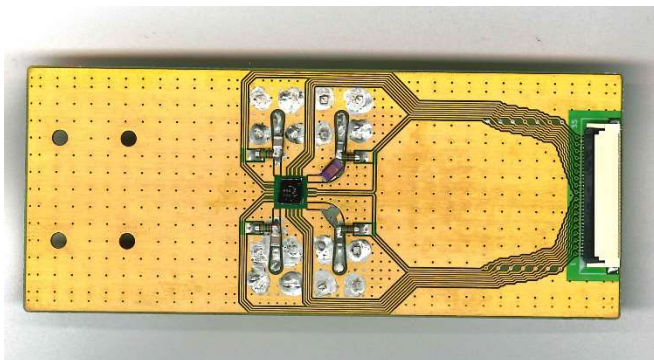
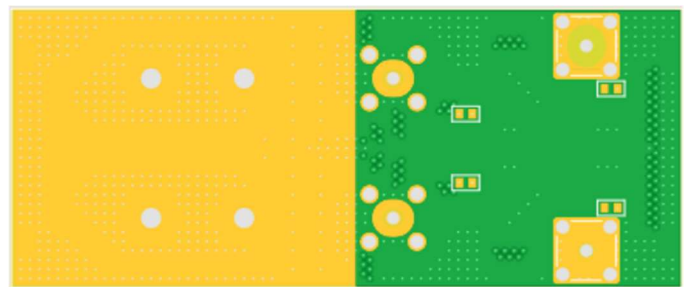
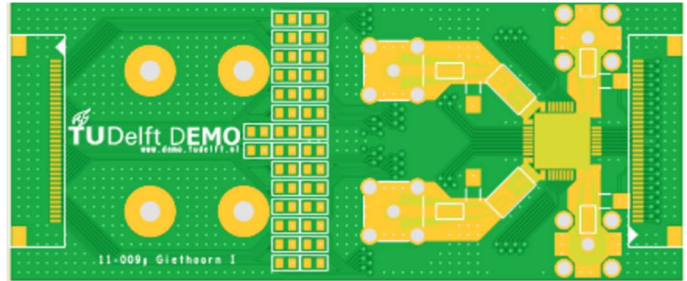
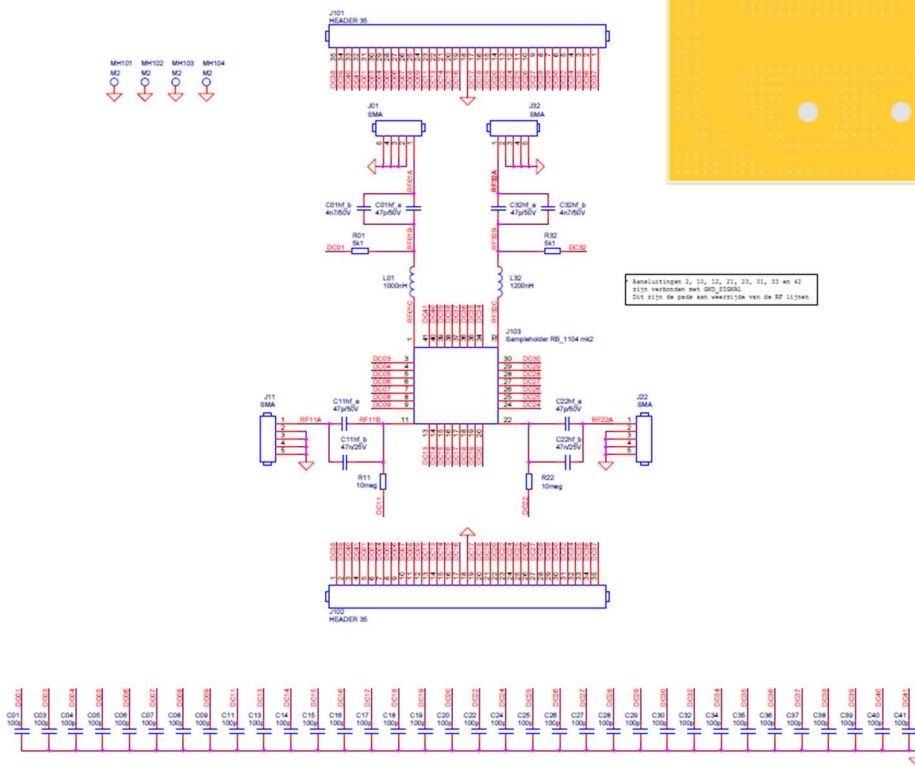
## Copper Finish:

Ni/Au Selective

## Size (LxWxT):

72 x 30 x 1.55

## Schematic:



# 11-010 Sample Boards Laird

11-010-1

**Connector:**

2 x FFC35 Right Angle

2 x SMA Connector Right Angle

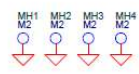
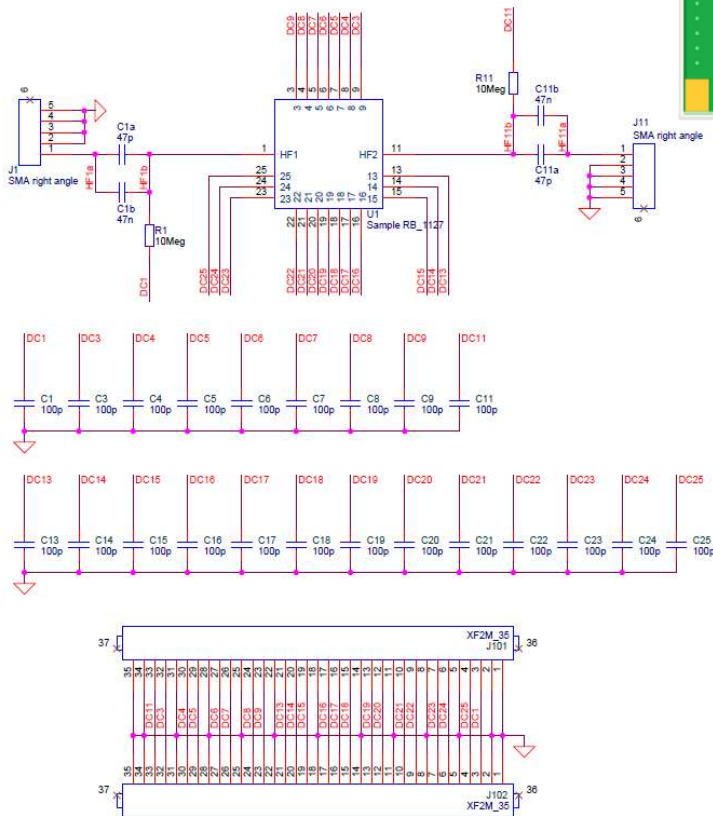
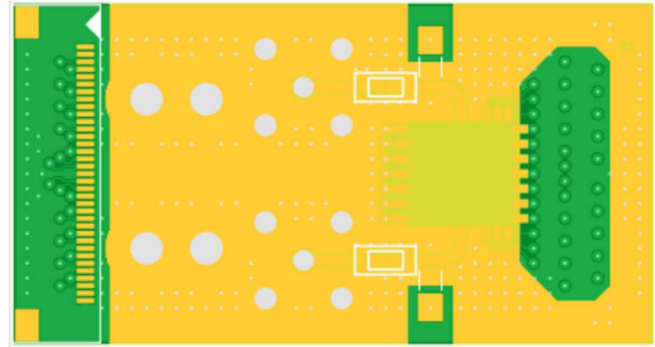
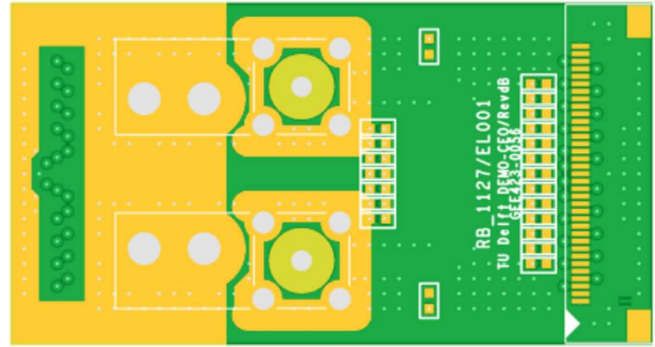
**Copper Finish:**

Ni/Au Selective

**Size (LxWxT):**

43 x 23 x 1.55

**Schematic:**



# 11-010-2

## Connector:

6 x SMA Connector Edge Launch

2 x Connector 11-010-3

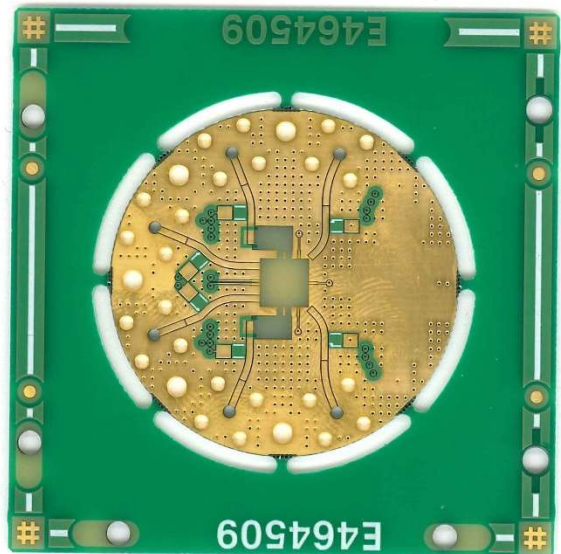
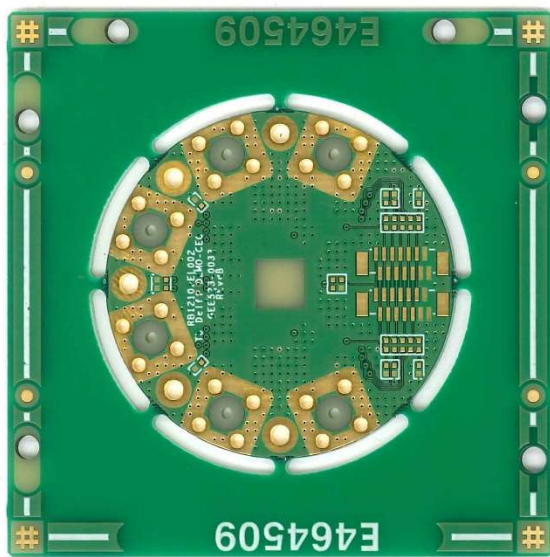
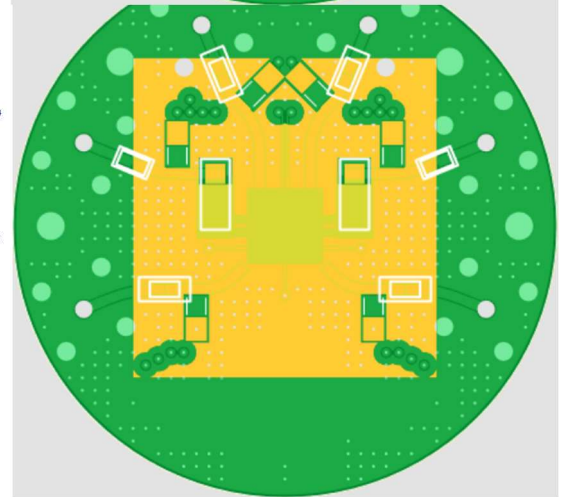
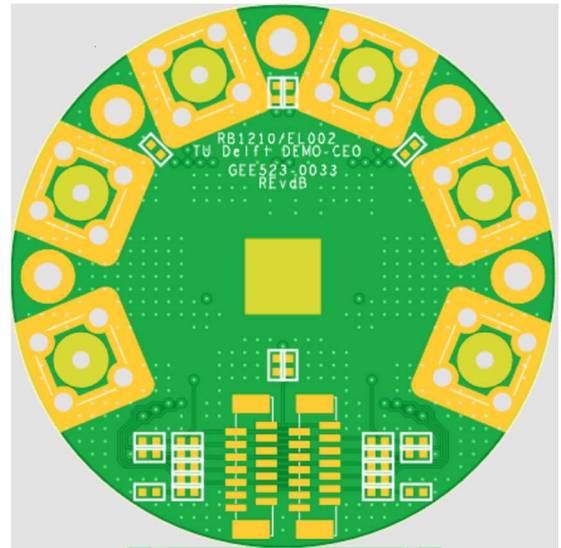
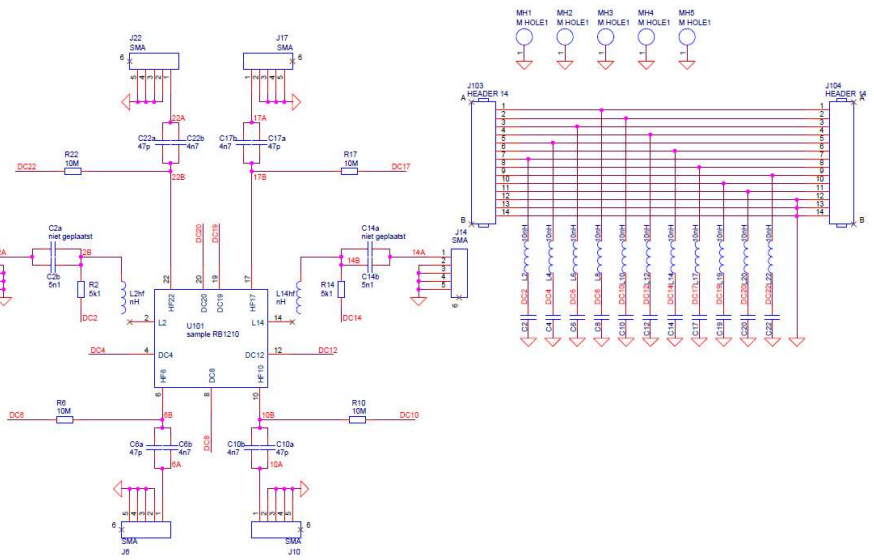
## Copper Finish:

Ni/Au Selective

## Size (LxWxT):

43 x 43 x 1.55

## Schematic:





11-010-3

**Connector:**

-None-

**Copper Finish:**

Ni/Au Selective

**Size (LxWxT):**

8 x 10.5 x 0.2

**Schematic:**

